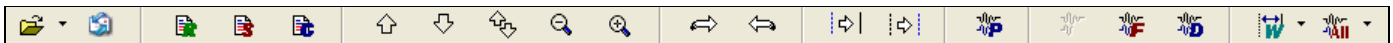




Wavewin Analysis Toolbar



Features:

- AC / DC current and voltage monitoring
- Up to 26,1 KHz sampling frequency
- Up to 360 samples per cycle
- 24 analog input channels
- Dry contact monitor
- Non-intrusive current and voltage sensors
- User defined triggers on all channels
- Unattended data capture and file storage
- Universal power supply 85-265VAC, 120-370VDC

Description:

The Wavewin™ Sniffer 24 is a high accuracy, high speed analog to digital recorder. The recorder has 24 analog input channels with 16-bit resolution and 21.6 KHz per channel sample rate. It is provided as a portable unit or fixed installation rack mount.

The recorder is extremely rugged, and fan-less, -40°C to +85° C operating temperature. It accepts multiple sensor types on any input port to monitor AC and/or DC Voltages and Currents. It is a powerful investigative tool for trouble shooting, timing and monitoring. It may also be used as a permanent disturbance monitor with Ethernet network connectivity. It has user defined triggers on any or all channels.

The system sensors can safely be connected to equipment without any circuit interruption or without removing equipment from service. It is ideally suited for deployment and capture of transient events or static testing. Users may connect a monitor, keyboard and mouse. (Optional Portable Keyboard/Monitor)

Specifications:

Processor Specifications:

SBC:	Intel® ATOM™ (1.66 GHz)
RAM:	1GB
USB Ports:	(2) USB 2
Serial Ports:	(4) RS-232 (2) RS 232/485
Networking:	10/100/1000 Mbps
Memory:	16 GB flash drive
Input power:	85-265VAC, 120-370VDC
Power:	20W
Operating Temp:	-40°C to +85°C
Shock:	IEC 68-2-27
Vibration:	MIL-STD-810E 514.4
Dimensions (inches):	19" x 15" x 3.5"
Weight (Portable):	20 lbs

Recorder Specifications:

Inputs:	24 channels (differential)
Resolution:	16-bit A/D resolution
Skew Factor:	0.5° max (parallel sampling)
Sample Rate:	Up to 21.6 KHz / channel
Input mode:	Differential
Input ranges:	±10 V, ±5 V, ±2 V, ±1 V, ±0.5 V, ±0.2 V, ±0.1 V
Accuracy:	<± 2LSB after auto-calibration
Operating Temp:	-30°C to +70°C



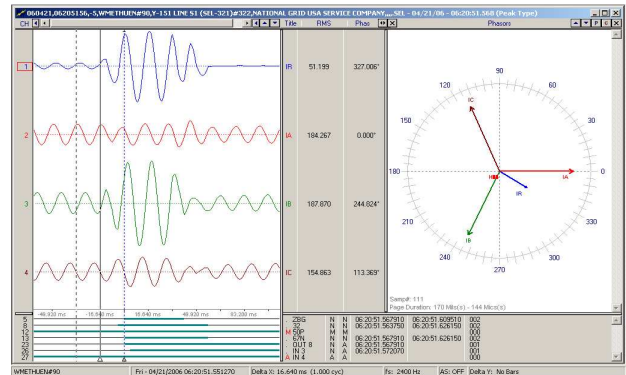
Rack Mount

Measurements and Calculations:

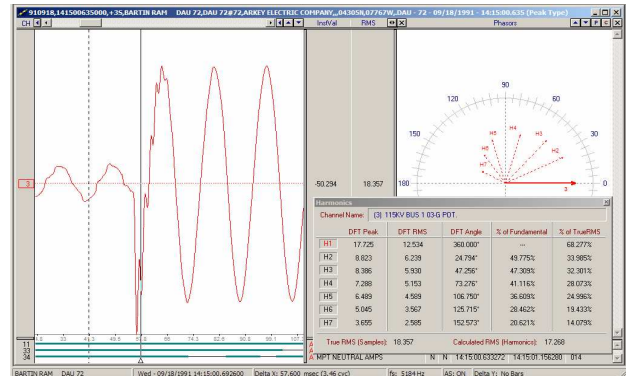
- Voltages: A, B, C line to neutral phases
- Currents: A, B, C phases and neutral
- Temperature: Fahrenheit, Kelvin, Celsius
- Targets: DC signatures (relay trip)
- Frequency: Cyclic, delta T, instantaneous
- Components: -, zero, + sequences
- Location: Single/double ended
- Power: Active, reactive, power factor
- Keys: Zero crossings/peaks
- Duration: Up to 22k scans w/user settings
- Rate: Up to 360 samples/cycle
- Standards: C37.111, C37.114, C37.118, C37.232
- Timing: IRIG-B/PPS (0.2 msec accuracy)

Captures and Triggers:

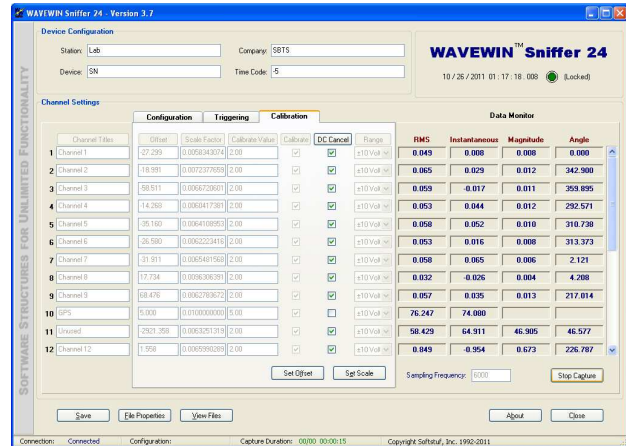
- Disturbance: Continuous capture (1 - 5 minutes)
- Periodic: 1 sec - 15 min averages (daily)
- Triggers: Instantaneous (spike filters)
RMS (recursive, 1 cycle seed)
Peak (recursive DFT)
Phase (user defined reference)
Harmonic/Frequency (custom)
- Settings: Less than (raw or absolute)
Equal to (raw or absolute)
Greater than (raw or absolute)
Rate of change (for any trigger)
- Hysteresis: Persistence (in milliseconds)
Boundary (upper and lower)



Wavewin Transient Data Display & Analysis



Wavewin Directional Harmonics Display



Configuration Software

Contact Us:

To purchase the Wavewin Sniffer 24, please contact our Sales Department @ 800-818-3463, sales@softstuf.com.

Hours: Monday through Friday, 9:00 a.m. to 6:00 p.m. EST (Visa, Master Card, American Express, and POs accepted)

Mailing Address:
SOFTSTUF, Inc.
P.O. Box 40245
Philadelphia, Pa 19106-0245
www.softstuf.com

Support:
Phone: 215-922-6880
Fax: 609-677-8736
support@softstuf.com